

USB Recorder



User's Guide

Table of Contents

1. Getting Started

- 1-1First Login
- 1-2Creating a New User

2. Administration

- 2-1General Administration
- 2-2User Administration

3. Recording and Playing

- 3-1 Using the Recorder
- 3-2Using the Software

4. Organizing Recordings

- 4-1Recording List
- 4-2 Recording Data

5. Queries

6. Errata

- 6-1 Automatic Login
- 6-2 Sparky Support

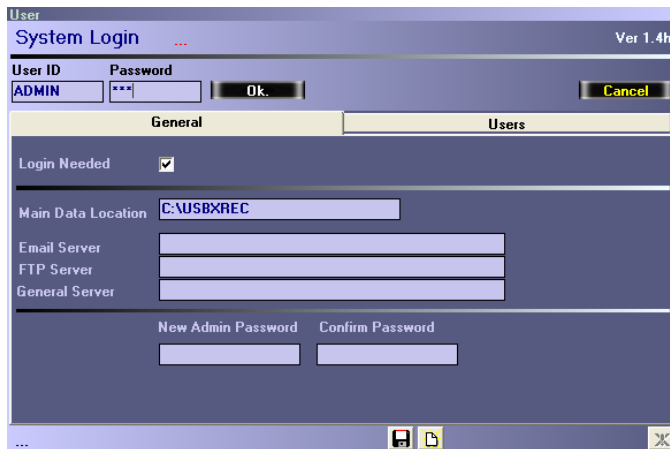
1. Getting Started

1-1 First Login

When you first start up the USB Recorder software, you will see the following screen:



Enter 'ADMIN' as the User ID, and make the password field blank, then click the OK button. The administrator settings screen will appear:



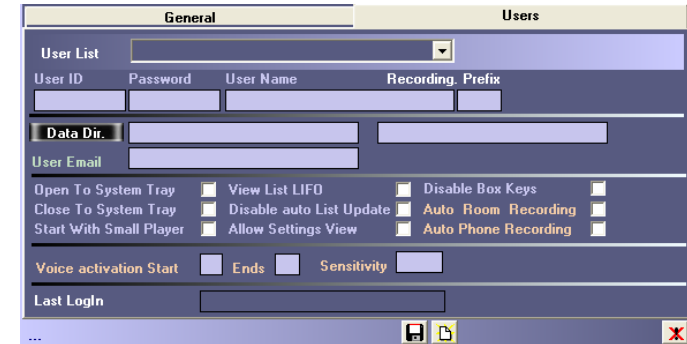
The first thing you should do is create a new administrator's password. Enter a password in the 'New Admin Password' field, and then re-enter the password in the 'Confirm Password' field. To save the new password, click the Save button at the bottom of the window:



Click to save the new Admin password.

1-2 Creating a New User

Select the 'Users' tab. You should see the following options:



Enter in your new user's User ID and Password. For now, don't worry about filling in any of the other data fields. Click the Save button at the bottom of the window to create the new user.

Log In as the New User

Enter the newly created user's ID and Password into the 'User ID' and 'Password' fields, and then click the 'OK' button. You will see the main recorder screen, and can now begin recording conversations. For more information, see Section 3.

2. Administration

2-1 General Administration

General administration options are controlled from the 'General' tab on the administration screen:

The screenshot shows the 'General' tab of the administration screen. It includes fields for 'Login Needed' (checkbox), 'Main Data Location', 'Email Server', 'FTP Server', 'General Server', 'New Admin Password', and 'Confirm Password'. At the bottom, there are 'Save' and 'Clear' buttons.

Login Needed – If checked, users will always be required to enter a User ID and Password, i.e. no automatic login.

Main Data Location – This is the directory where the system will keep the user settings database.

Email Server – The SMTP server for outgoing user email.

FTP Server – Reserved for future use.

General Server – Reserved for future use.

New Admin Password / Confirm Password – Use these fields to change the admin password.



– Save button. Click to save your changes.



– Clear button. Click to reset all data fields.

2-2 User Administration

User administration options are controlled from the 'Users' tab on the administration screen:

The screenshot shows the 'Users' tab of the administration screen. It includes a 'User List' dropdown, fields for 'User ID', 'Password', 'User Name', 'Recording', and 'Prefix'. There are also fields for 'Data Dir.' and 'User Email'. A section for 'Voice activation' includes 'Start', 'Ends', and 'Sensitivity' fields. At the bottom, there is a 'Last Login' field. The interface includes 'Save' and 'Clear' buttons at the bottom right.

User List – This popup menu allows the administrator to select any of the users on the system, and change their settings.

User ID – The user's User ID.

Password – The user's Password.

User Name – The user's name.

Prefix – A three-letter prefix appended to all audio files created by the user.

Data Dir – The first Data Dir field is the directory the user's audio files are stored in. Click the 'Data Dir.' button to browse for a new location.

The second Data Dir field is the directory used for storing backups of the user's audio files. This directory must be typed in manually.

User Email – The return email address shown on emails the user sends.

Checkbox Settings

Open To System Tray – If checked, the user can only run the software in the background, never seeing a player, only a system tray icon. In this mode, the user can only record using the buttons on the USB Recorder itself, or through automatic recording of conversations. Note that a user with this option enabled cannot even quit the software his or herself—an admin or other user with higher access must log in first.

Close To System Tray – Indicates that when the player is closed, the application will simply collapse to the system tray and continue running in the background.

Start With Small Player – This option indicates that upon logging in, the user is initially presented with the small version of the player. The default is for the large player to come up at first.

View List LIFO – Orders the user's recording list (see Section 4-1) from most recently recorded to least recently, instead of the other way around.

Disable auto List Update – Stops the software from updating the recording list every time a new recording is made. Can greatly improve performance in situations where a user has thousands of saved recordings.

Allow Settings View – Enables the user to see the settings the Admin has given them through the 'Profile' button on the player.

Disable Box Keys – Disallows the user from accessing the USB Recorder functionality by pressing the buttons on the recorder itself.

Automatic Recording Settings

Auto Room Recording / Auto Phone Recording – Enables or disables automatic room/phone recording. Only one of these can be active at a time; if both are checked, the software defaults to automatic room recording.

Voice Activation Start – Duration, in seconds, for which system must hear audio to begin automatic recording. The default is 2 if no value is entered.

Ends – Duration, in seconds, for which system must hear silence to turn off automatic recording. The default is 2 if no value is entered.

Sensitivity – The threshold at which the automatic recording function determines noise from silence. The default is 100 if no value is entered.

Buttons



– Save button. Click to save a new user, or to save changes to a previous user's settings.



– Clear button. Click to reset all data fields.



– Delete button. Click to delete a user from the system.

3. Recording and Playing

3-1 Using the Recorder



Once a user has logged in, he or she can begin recording and playing back conversations. One of the ways to do that is by using the buttons on the USB Recorder itself, assuming the administrator has not disabled the user's ability to do so.



– Plays the last file recorded.



– Begins recording from the phone. Press the button again to stop recording.



– Begins recording from the room, using the room microphone. Press the button again to stop recording.

3-2 Using the Software



The user can also record and play conversations using the software player.



– Begins recording.



– Stops playback or recording.



– Plays a recorded conversation.



– Pauses playback or recording.



– Rewinds playback by three seconds.



– Fast-forwards playback by three seconds.



– Skips playback to the beginning of the recording.



– Skips playback to three seconds from the end of the recording.



– The slider allows jumping to a given point in the recording.

Rec. Room

– If checked, the software player's record button will record from the USB Recorder's room microphone. Otherwise, the record button will record from the phone.

Play Phone


– If checked, recordings will be played using the telephone, rather than using the PC speakers. This setting will affect the function of both the software play button and the [Play/Stop] button on the USB Recorder.

4. Organizing Recordings

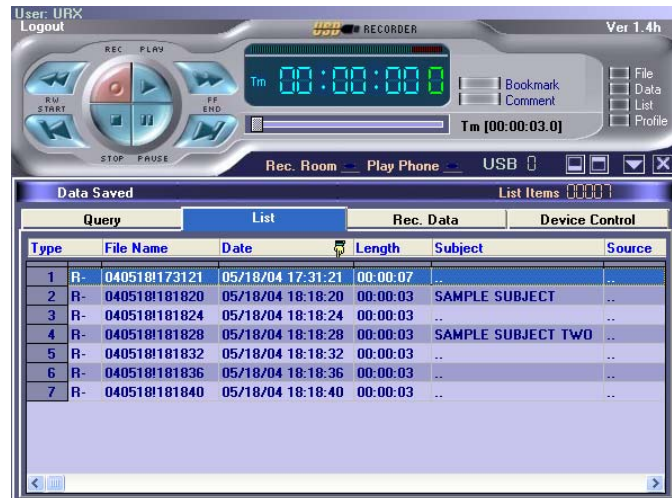
The recorder software provides two functions for organizing recordings. The first, covered in section 4-1, is a list view of all a user's recordings. The second, explained in section 4-2, is a facility for changing the filenames of recordings, assigning subjects and sources, and bookmarking/commenting certain locations within the recording.

4-1 Recording List

To view the Recording List, click the List button on the right side of the main player:

 **List** Click the List button to bring up the Recording List.

The Recording List will come up below the player:



Click any of the recordings in the list to play that recording. The list can also be sorted by the data in a given column by

clicking on any of the column headers. Clicking on the same column again switches between an ascending/descending sort order. An icon of a hand distinguishes between the two:

List		Rec. Data	
Date	Length	Subject	
840 05/18/04 18:18:40	00:00:03	..	
836 05/19/04 18:18:36	00:00:03	..	
828 05/22/04 18:18:28	00:00:03	SAMPLE	

Recordings sorted in ascending order by date.

List		Rec. Data	
Date	Length	Subject	
840 05/18/04 18:18:40	00:00:03	..	
836 05/19/04 18:18:36	00:00:03	..	
828 05/22/04 18:18:28	00:00:03	SAMPLE	


Recordings sorted in descending order by date.

Right-clicking a recording brings up a popup menu where you can remove the recording, back it up (copy it to the user's backup directory), do both, or email it to a third party:

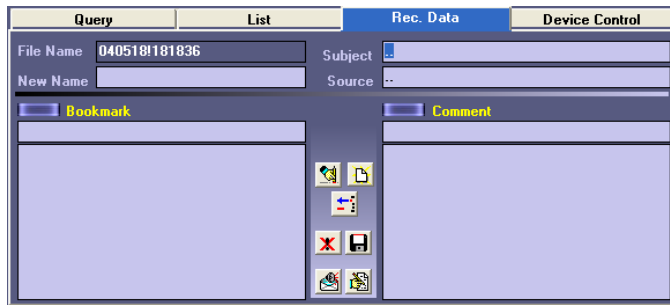
Query		List		Rec. Data		Device Control	
Type	File Name	Date	Length	Subject	Source		
1 R-	040518173121	05/18/04 17:31:21	00:00:07		
2 R-	040518181820	05/18	BackUp	SAMPLE SUBJECT	..		
3 R-	040518181824	05/18	Remove		
4 R-	040518181828	05/18	BackUp And Remove	SAMPLE SUBJECT TWO	..		
5 R-	040518181832	05/18	Email		
6 R-	040518181836	05/18		
7 R-	040518181840	05/18/04 18:18:40	00:00:03		

4-2 Recording Data

With a recording selected from the 'List' tab, click the 'Rec. Data' tab. You can also access the Recording Data tab from the player by clicking the Data button on the player:

 **Data** Click the Data button to bring up the Recording Data tab.

The Recording Data tab:



File Name, Subject and Source

File Name – The recording's current file name.

New Name – Here, you can enter a new name for the recording.

Subject – The subject of the recording.

Source – The source of the recording.



– Save button. Click to save changes to the file name, subject or source.



– Delete button. Click to delete the recording altogether.

Bookmarks and Comments

A single recording can have multiple Bookmarks and Comments, as they mark an instant of time within the recording. A Bookmark is just a simple marker, allowing the user to quickly return to a specific moment within the recording. A Comment is the same thing, but with the added ability to attach a note.

Bookmarks

To add Bookmarks, start playing a recording. When the moment you wish to mark arrives, click either the Bookmark button on the 'Rec. Data' tab:



Click to set a Bookmark.

Or click the Bookmark button to the right of the recording time display on the player:

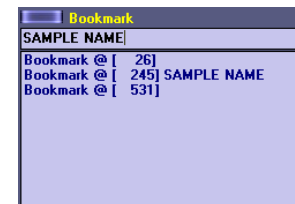


Click to set a Bookmark.

Added Bookmarks will appear in the Bookmark list, along with a number indicating the number of seconds into the recording they mark:



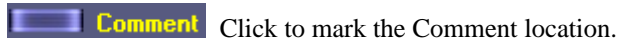
To give a Bookmark a short name, click on it, type the name in the field between the list of Bookmarks and the Bookmark button, and press [Enter]:



Comments

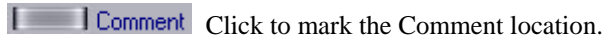
Comments are an extension of Bookmarks that also allow you to save a short note about the marked position.

To add a Comment, start playing a recording. When the moment you wish to mark arrives, click either the Comment button on the 'Rec. Data' tab:



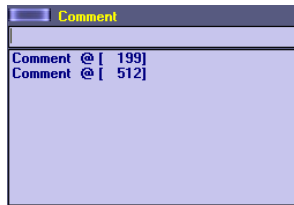
Click to mark the Comment location.

Or click the Comment button to the right of the recording time display on the player:

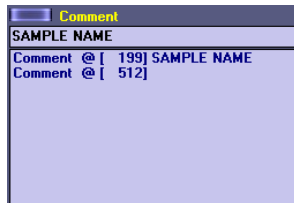


Click to mark the Comment location.

Added Comments will appear in the comment list, along with a number indicating the number of seconds into the recording they mark:



To give a Comment a short name, click on it, type the name in the field between the list of Comments and the Comment button, and press [Enter]:

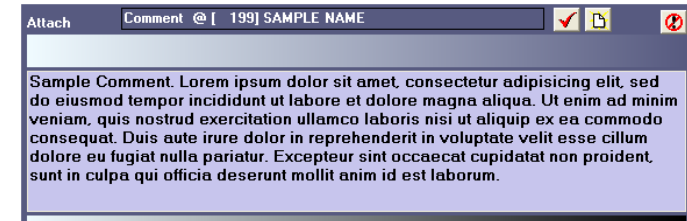


To edit the actual Comment, select the Comment you wish to edit from the list, and then click the Edit Comment button:



Click to edit a Comment.

The Comment editing screen will appear:



The text seen above starting with "Sample Comment" is the text of the comment, which you can edit here. The buttons on the top right work as follows:



– Saves the changes to the Comment.



– Clears the text in the Comment editing section.



– Exits the Comment editing screen without saving changes.

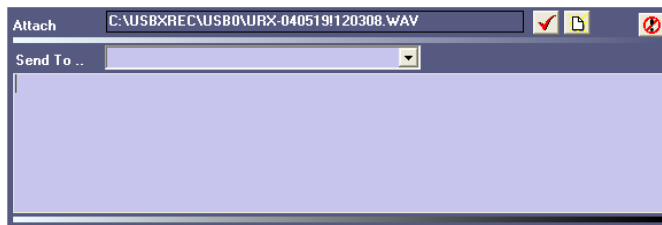
Emailing a Recording

To email a recording, select from the 'List' tab the recording you wish to email, and then click the Email button at the bottom of the 'Rec. Data' tab:



Click to email a recording.

The Email Recording screen will appear:



Type in an email address in the 'Send To...' field, or select one from the popup menu of addresses previously used. Next, type your message into the space below the 'Send To...' field. Finally, click the Check button to send the email.



Click to send the email.

Note: The system administrator must have entered an email server for the system, and an email address for the user, for this function to be available for a given user.

Other buttons on the Email Recording screen:



– Clears the destination email address, as well as the text in the email editing section.



– Exits the Email Recording screen.

5. Queries

The 'Query' tab displays the Query screen:

To run a query, you select the various options you wish to use when querying the recordings, and click the Check button. The Recording List screen will appear, with only the recordings which match the Query displayed.



Click to run the query.

To clear a query and return the List view to showing all recordings, click the New button, which erases all the query settings, and then the Check button to run the blank query.



Click to reset all query options to blank.

Preset Query Options

The five checkboxes below the 'Query Name' field are preset queries.

All – Return all recordings.

Today – Return recordings made today.

Last – Return the last recording made.

Rec. Phone – Return all recordings made from the phone.

Rec. Room – Return all recordings made from the room.

Date/Time and Length Query Options

You can select a date/time range for the query, as well as a length range. Note that times of day must be entered in 24-hour format. Both specific times and lengths of time are entered in hour-minute-second format.

File Name, Subject and Source Query Options

The File Name, Subject and Source query options all work the same way, and are best explained by example. The following are the steps to query for all recordings with a subject that contains the word "sales". The File Name and Source query functions operate identically.

First, select the 'Subject' tab. Now, click in the first column of the first line. The word "AND" should appear (the AND and OR keywords will be explained momentarily):

Click in the second column, and type "*sales*". (The asterisks are wildcards, and indicate that any string of zero or more characters can occur before or after the word "sales".) The input in the second column is case insensitive, so there is no need to worry about capitalization.

	File Name	Subject	Source
AND	*sales*		

Finally, click on the Check button to run the query. All recordings with subjects containing “sales” will be returned:

Type	File Name	Date	Length	Subject	Source
1 R-	040518181828	05/22/04 18:18:28	00:00:03	MARCH SALES CALL	..
2 R+	040518181840	05/18/04 18:18:40	00:00:03	WIDGET SALES	..
3 R+	040519120308	05/19/04 12:03:08	00:09:41	DESALES UNIVERSITY	..

AND and OR Keywords

The AND and OR keywords have a simple function, if not necessarily straightforward. Recordings matching query text following any OR keyword will be displayed on the results list. In contrast, the AND rows' query text gets grouped together, so that only recordings matching the query text of every AND row will appear on the results list. For example, take the following query:

	File Name	Subject	Source
AND	*sales*		
AND	*the*		
OR	*brian*		
OR	*ted*		

This query will return any recording containing “brian” in the subject, any recording with “ted” in the subject, plus any recording with both “sales” and “the” in the subject.

Saving Queries

To save a query in order to run it again later, type a name into the ‘Query Name’ field, and then click the Save button.



Click to save a query.

When you wish to re-run the query, simply select it from the ‘Query Name’ popup menu, and click the Check button.

6. Errata

6-1 Automatic Login

There are two cases where automatic login will occur, if it has been enabled by the administrator (see section 2-1).

- 1.) Users with the Open to System Tray option selected (see section 2-2) will be automatically logged in, if they were the last user to access the system.
- 2.) If the last user to access the system is not an Open to System Tray user, the system will attempt to automatically log in with user URX, using password URX. The administrator must explicitly create this account if he or she wishes to allow default access to the USB Recorder software.

6-2 Sparky Support

The Sparky model USB Recorder enables headset usage, and the ability to play recordings over a phone connection. If you have a Sparky model and wish to enable these features, click the Full Screen button on the player, and select the 'Device Control' tab:



Click to view the full-screen player.

On the Device Control screen, click the 'Sparky Functionality' checkbox on the top right, then click the Save button.



Click to save your changes.

Note: The 'Use Handset' checkbox allows you to use the handset, but still play recordings over a phone connection.