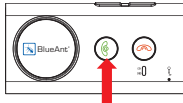


SUPERTOOTH 3

BLUETOOTH HANDSFREE

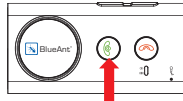
Quick Start Guide

1 First Time Turn ON and Pairing



Press the **green button** until the LED will blinks **red/blue**.

2



Confirm language selection by pressing the **green button** as soon as your language is spoken on the **SUPERTOOTH 3**.

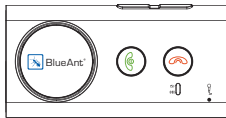
3

The **SUPERTOOTH 3** will then ask you to pair your phone.



On your phone bluetooth menu, search for devices and select **BlueAnt ST3** then enter **0000** as pincode.

4A

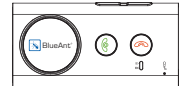


Phonebook transfer will be initiated. Accept any connection request on your phone if prompted. Then wait until **SUPERTOOTH 3** says: **"BlueAnt ST3 ready, connected to phone."**

4B

In case your phone doesn't support automatic transfer (don't press the **red key** of your **SUPERTOOTH 3**), go to your phones **"Contact Menu"**, then select:

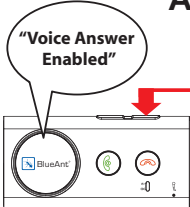
- 1) OPTION
- 2) Mark all } if available
- 3) Option }
- 4) Send or Send Business card
- 5) Via Bluetooth
- 6) Select BlueAnt ST3



Note: Blackberry and Smart phone owners please refer to section F of user guide.

5A

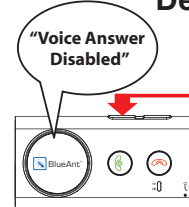
Activation of Voice Answer:



Press **VOL +** for 5 seconds until the **SUPERTOOTH 3** confirms this mode.

5B

Deactivation of Voice Answer:



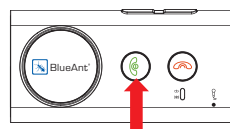
Press **VOL -** for 5 seconds until the **SUPERTOOTH 3** confirms this mode.

NOTE: Voice activation or deactivation is possible only if you're not on call.

6

Manual Answer

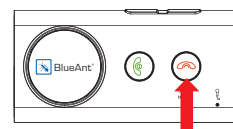
Press the **green button** to answer incoming call.



7

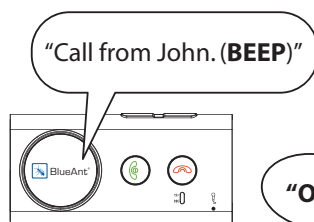
End / Reject Call

Press the **red button** to end or reject a call.



8

Voice Answer (if option is activated)



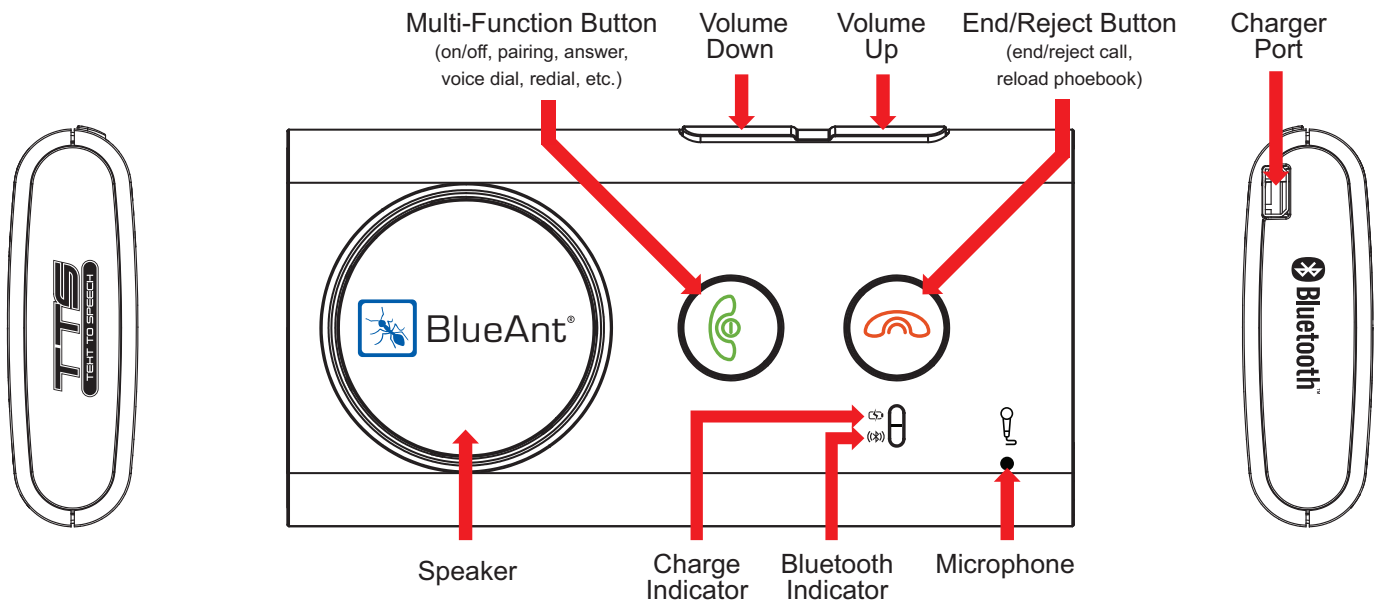
After the BEEP, say clearly one of the words below:

- "ACCEPT CALL"
- "ACCEPT"
- "ANSWER"
- "OK"

IMPORTANT: Voice answer will not work if you don't wait for the **BEEP**.



BlueAnt®



Installation

Fix the metal clip of the SUPERTOOTH 3 to the sun-visor

Attach the magnetic back of the SUPERTOOTH 3 to the fixed metal clip

The SUPERTOOTH 3 must be placed in such a way that its microphone is directed to the mouth of the user.

Other Functions

Turn ON

Press the **green button** for 1 second to turn ON.

Turn OFF

Press **green button** until "SUPERTOOTH VOICE Powering Down" is announced.

Increase Volume

Press repeatedly **VOL +** to increase volume.

Decrease Volume

Press repeatedly **VOL -** to decrease volume.

